

Alaska Department of Fish and Game

Habitat Section
Southeast Region



191-20-13600 Tributary 1

ADDITION

Water body name:

Survey date: 8/24/2024

Quad: Icy Bay D2, D3

Species & Lifestage:

Upper Reach Latitude: 59.987743 **Longitude:** -141.693641

Survey crew: NJ, CD, FC

Lower Reach Latitude: 59.985362 **Longitude:** -141.713770

Findings: We surveyed this uncataloged stream using a backpack electrofisher, baited minnow traps, and GPS and captured juvenile coho salmon. This is a ditch stream on the north side of the road and is a distributary of Stream No. 191-20-13600 (Big River). The ditch was not fished past waypoint 1165 due to time but fish presence likely continues; unsure of where extent of ditch ends (Table 1; Figures 1–3).

Recommendations: Add this uncataloged stream to the anadromous waters catalog for rearing coho salmon up to waypoint 1165 (Figure 4).

Nomination: Pending

Table 1.–191-20-13600 tributary 1 survey data.

Waypoint	Latitude	Longitude	Notes	Stream Width ft	Stream Substrate	Habitat Features	Gradient %	Sample Effort	Sample Results
1164	59.985379	-141.713290	On ditch closer to the road, has lots of standing water, but no observable flow. Doesn't show on map. Approximately 10 feet wide and straight.		Fine Organic		0-1	EF	2 CO
1165	59.985404	-141.713584	Confluence where the tributary enters the ditch that parallels the road. CO caught in the trib just upstream of confluence.		Fine Organic		0-1		
1166	59.985398	-141.713214	No traps set upstream in ditch. Furthest extent of current water, but habitat continues in ditch channel during higher water.		Fine Organic		0-1	MT	30 CO
1167	59.985782	-141.717033	Discontinues through this point at least, it still has water.						
1168	59.986402	-141.722636	Still on the same ditch, still has water.						



Figure 1.–Juvenile coho salmon caught at waypoint 1166.



Figure 2.—Looking upstream at waypoint 1164.



Figure 3.—Looking downstream at waypoint 1166.

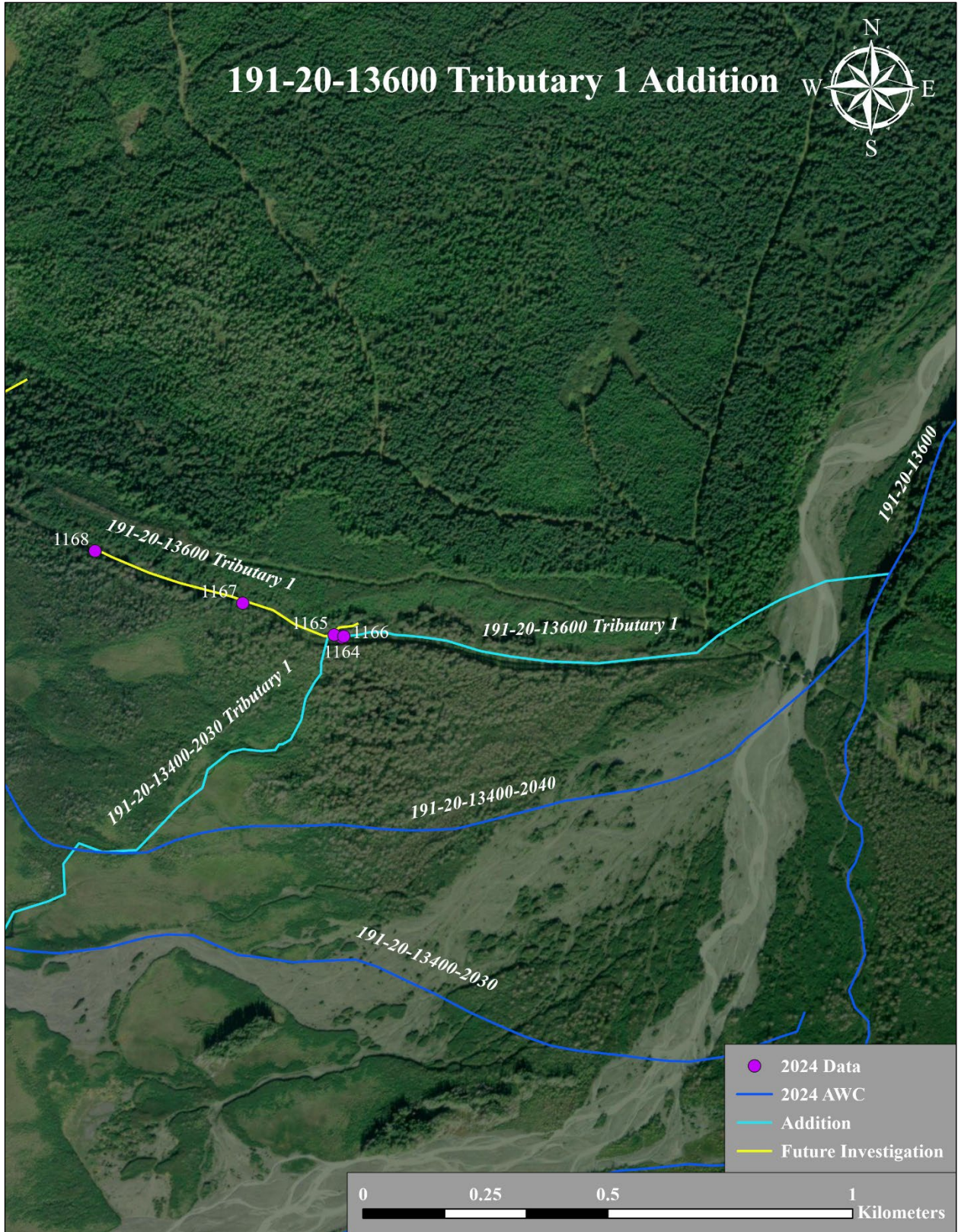


Figure 4.–191-20-13600 tributary 1 addition map.

